

CERTIFICATE OF LOCATION OF GOVERNMENT CORNER

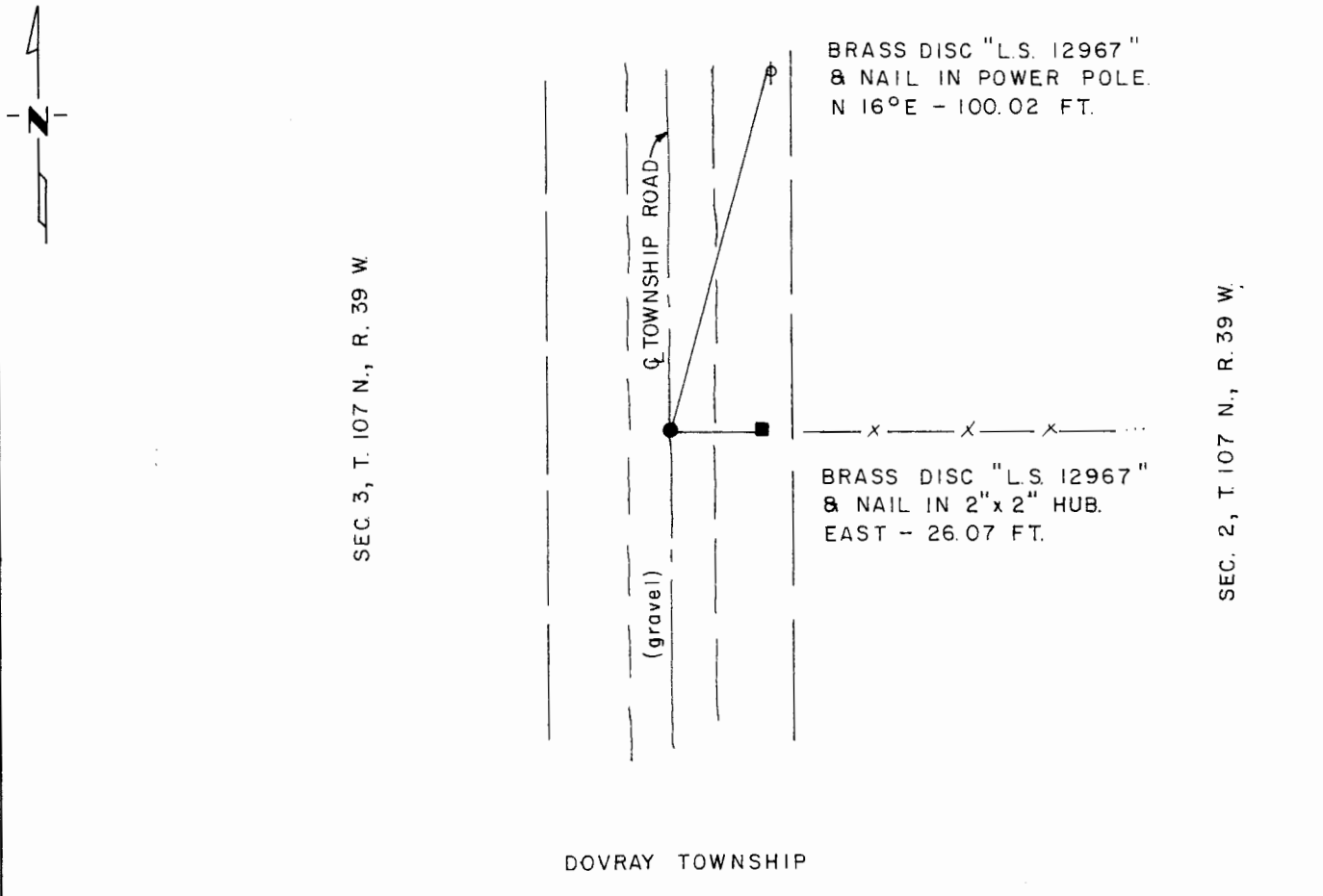
East Quarter Corner of Section 3, Township 107 N., Range 39 W., 5th P.M.

STATE OF MINNESOTA, County of Murray

At the corner location shown on the sketch:

- On Oct. 9, 1980 found a field stone with pointed edge up 1.6' below grade; stone
DATE
is in line with fence line to the east & on the C of the Township Road.
 - left monument as found, lowered monument, removed monument (explain)
- On Oct. 9, 1980 placed a 1/2" iron reinforcing bar set with "L.S. 12967" cap
DATE
above the stone.

SKETCH OF REFERENCE TIES



DOVRAY TOWNSHIP

I hereby certify that this document and the data contained herein was prepared by me or under my direct supervision.

Gay S. Apat 12/28/81
SIGNATURE DATE

Registration No. 12967

Land Surveyor, Professional Engineer
 County Surveyor, County Engineer

OFFICE OF THE COUNTY RECORDER
 County of Murray

I hereby certify that this document was filed in the Co. Recorders office at 10 .M. on the 18th day of February A.D., 19 82

County Recorder Willard W. Ohme
 By _____, Deputy

DOCUMENT NO. _____